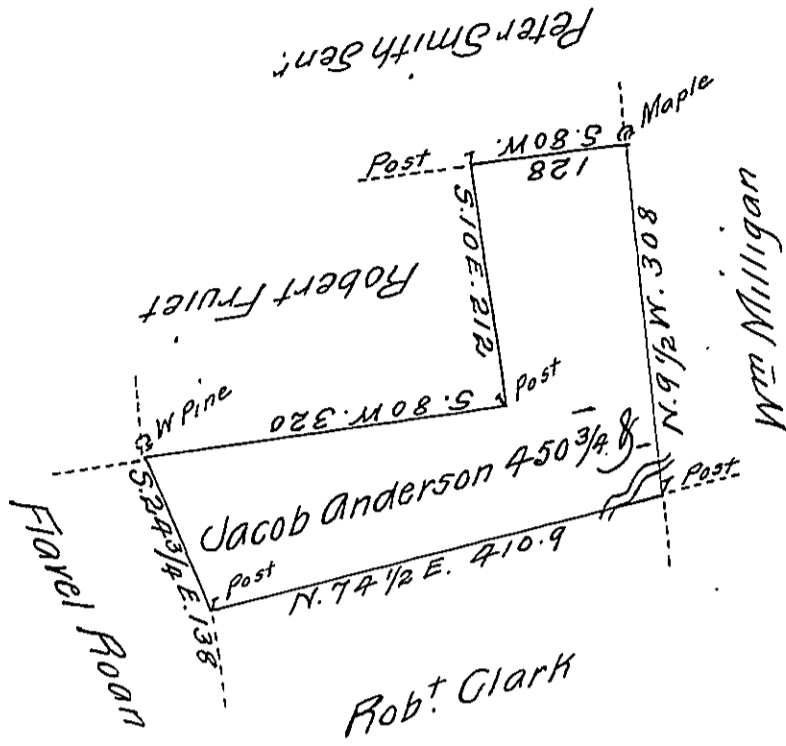


Hazle -
Luzerne



Draft of a tract of land Called _____ Situate Near Land Surveyed
 for Henry Lebo in the County of Northum^d Containing four Hundred
 & fifty acres 3/4 & Allow^e Surveyed for Jacob Anderson the 15th Day
 of October 1793 by Virtue of a Warrant dated the 13th day of June 1793.
 by W^m Gray D.S.

To Daniel Brodhead Esq^r }
 Surr^t Gen^l }

IN TESTIMONY that the above is a copy of the original remaining on file in
 the Department of Internal Affairs of Pennsylvania, made
 conformably to an Act of Assembly approved the 16th day of
 February, 1833, I have hereunto set my Hand and caused
 the Seal of said Department to be affixed at Harrisburg,
 this Twenty Eighth day of August 1911

Henry Houck
 Secretary of Internal Affairs.